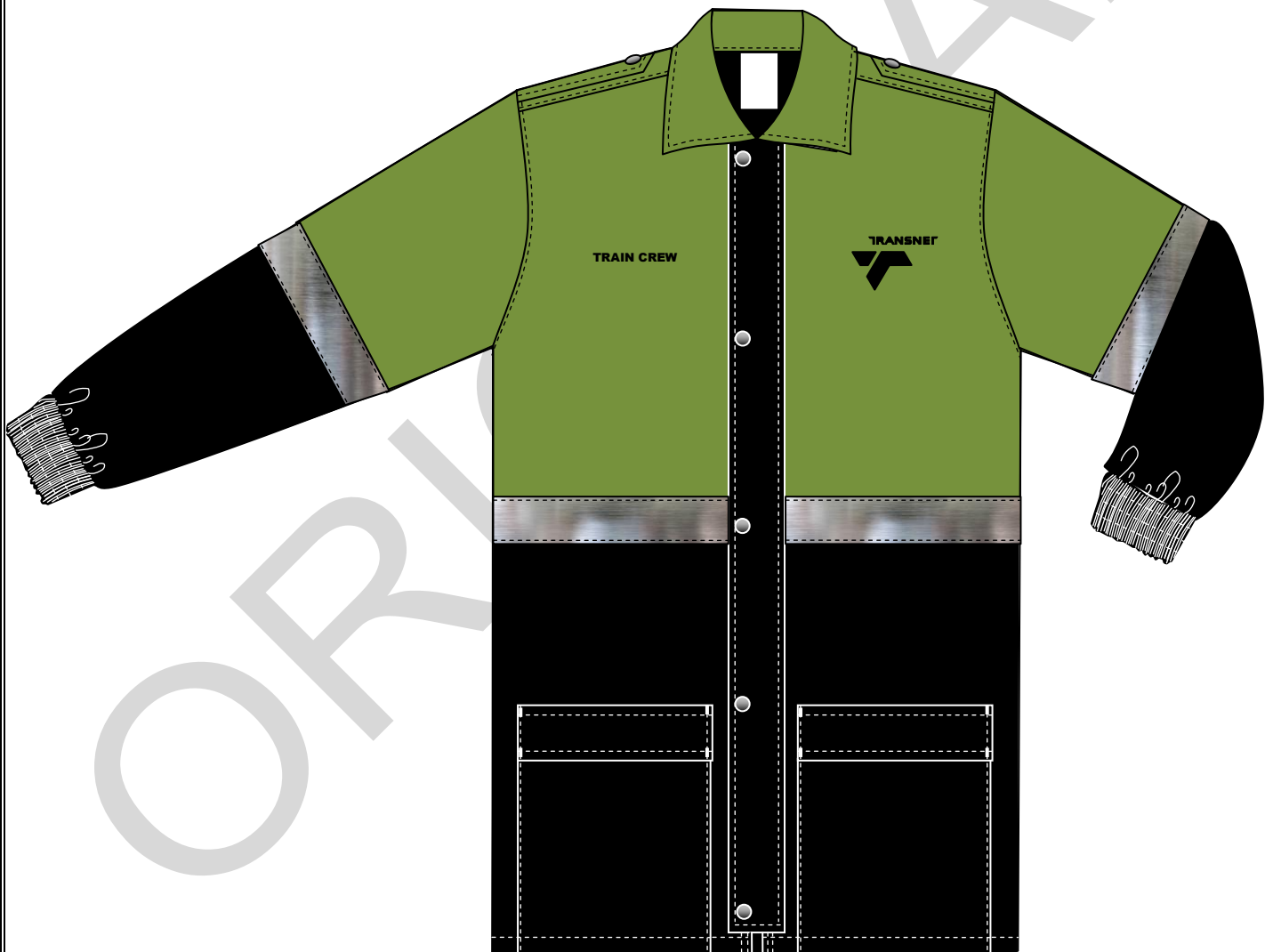


PRIVATE SPECIFICATION

prepared for



PARKA JACKET, UNISEX



CSS 286.21 G156

Version 01.0

June 2012

1. Scope

This specification covers the material and make of parka jackets for personnel of Transnet Limited.

ITEM NUMBER: 35162640

2. Definitions

For the purpose of this specification the definitions given in SANS 10371 "Terms and definitions for clothing" and the following shall apply:

Acceptable: Acceptable to the Transnet Limited

Nominal: Subject to the tolerances normal to good manufacturing practice

SANS: South African National Standard

3. Style

- ♦ slide fastener front closure with storm flap
 - storm flap to fasten with press-studs
- ♦ two side pockets
- ♦ fitted with embroidery on the foreparts
- ♦ front panels to have a horizontal seam that shall be covered with a strip of reflective tape
- ♦ each forepart shall consist of two contrasting colours
- ♦ back panels to have a horizontal seam that shall be covered with a strip of reflective tape
- ♦ each back panel shall consist of two contrasting colours
- ♦ turned-down type collar
- ♦ long sleeves that consist of two contrasting colours with a length of reflective tape covering the seam
- ♦ cuffs to be ruched with elastic webbing
- ♦ shoulder straps that fasten with press-studs
- ♦ fully lined with lining
- ♦ fully interlined with wadding

Doc No	Date	Responsibility	Version	Page
CSS 286.21 G156	June 2012	Transnet	V01.0	2 of 22

4. Illustrations

Illustrations are not to scale and are for guidance only.

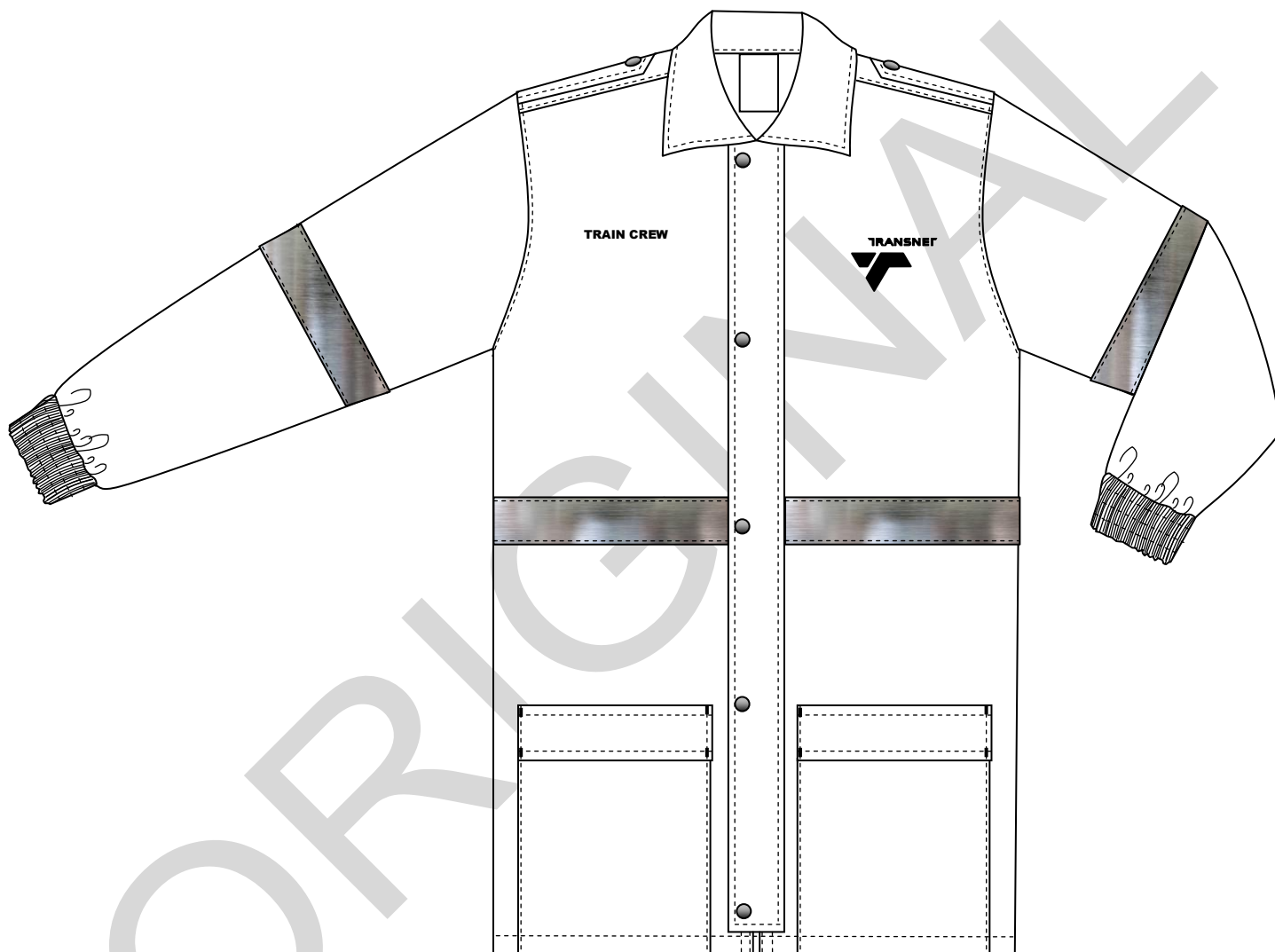


Figure 1 - Front

Doc No	Date	Responsibility	Version	Page
CSS 286.21 G156	June 2012	Transnet	V01.0	3 of 22



Figure 2 - Back

5. Client furnished Materials

No materials will be supplied by the Transnet Limited.

6. Component Materials

The following materials shall be supplied and used by the manufacturer. Trim charts shall also be submitted by the manufacturer (see Annex A).

6.1 Outer material

- ◆ to be an acceptable 2/1 twill Poly/Cotton fabric
- ◆ of nominal mass 235 g/m² when tested in accordance with SANS 79
- ◆ fibre composition to be 65% Polyester and 35% Cotton when tested in accordance with SANS 1833-1 and 1833-11
- ◆ resistance to pilling, colour fastness, dimensional stability requirements to comply with the relevant

Doc No	Date	Responsibility	Version	Page
CSS 286.21 G156	June 2012	Transnet	V01.0	4 of 22

- requirements as given in SANS 1387 -2
- ♦ finish to be such that it shall have a soft handle and shall be as agreed upon between the purchaser and supplier
- ♦ to include a water repellent finish that shall comply with the relevant performance requirements for water repellence as given for type RPR66 of SANS 1387-11
- ♦ to be supplied in two colours:
 - colour 1: an acceptable black colour as agreed upon between the purchaser and supplier
 - colour 2: to be an acceptable match to Pantone Colour No. 376 “Olive green”

6.2 Lining

- ♦ polyester lining that complies with the requirements for type L61P SANS 1387-7 “Woven cotton and similar apparel fabrics – Part 7: Jacket linings”
- ♦ colour to be black

6.3 Interlining

- ♦ acceptable fusible interlining
- ♦ complying with the requirements of CKS 627 “Fusible interlinings”

The selection of interlining of appropriate mass per unit area to be determined by consultation with the supplier of the interlining. The manufacturer will be held responsible for the performance of the interlining.

6.4 Wadding

- ♦ polyester wadding
- ♦ of nominal mass 120 g/m²

6.5 Press stud fasteners

NOTE: Behind each press-stud fastener section shall be a reinforcing patch of outer material on the inside of the jacket (not visible).

- ♦ corrosion resistant metal components with a plastics cap
- ♦ male and female type
- ♦ to consist of a cap, socket, stud and post
- ♦ plastics cap to have dome of nominal outside diameter 15 mm
- ♦ nominal inside diameter of the hole to be 7 mm
- ♦ colour of plastics cap to be black

6.6 Slide fasteners

- ♦ to comply with the requirements of Class D slide fasteners of SANS 1822 “Slide fasteners”
- ♦ synthetic elements
- ♦ colour to be black
- ♦ one-way open end

6.7 Elastic webbing

- ♦ to comply with the requirements for type 1 of SANS 142 “Narrow elastic fabrics and strip”

Doc No	Date	Responsibility	Version	Page
CSS 286.21 G156	June 2012	Transnet	V01.0	5 of 22

- ♦ to be of nominal width 45 mm

6.8 Reflective tape

- ♦ a high visibility reflective silver tape
- ♦ nominal width 37 mm – 40 mm
- ♦ retro-reflective properties to comply with the relevant requirements for a class 2 retro-reflective material of SANS 50471 “High visibility warning clothing for professional use – test methods and requirements”

6.9 Embroidery thread

- ♦ an acceptable 100% Viscose machine embroidery thread
- ♦ colour to be black

6.10 Sewing thread

- ♦ to comply with relevant requirements of SANS 1362 “Sewing thread”
- ♦ polyester-and-cotton core-spun
- ♦ ticket No 80
- ♦ colour to be an acceptable match to the colour with which it is used

7. Workmanship

The warm jackets shall be:

- ♦ cut and made with first-class workmanship throughout
- ♦ of uniform and acceptable make, colour and finish

Shall be free from:

- ♦ defects, which affect their appearance or may affect their serviceability (or both)
- ♦ marks
- ♦ spots
- ♦ stains, incurred in the making-up

Seams and stitches shall be:

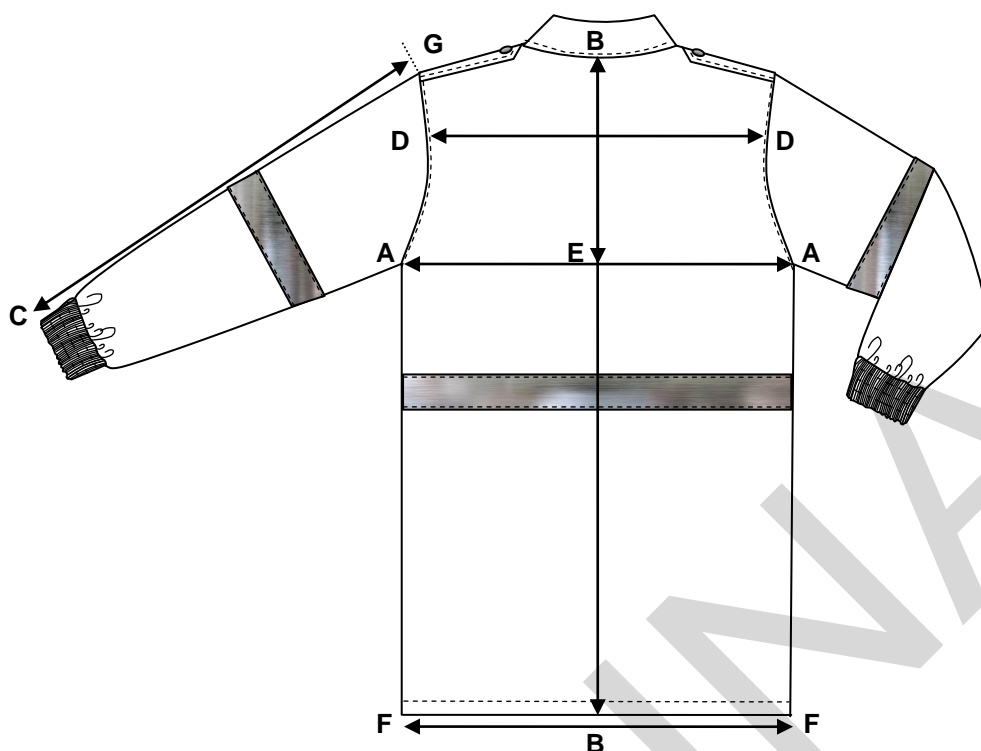
- ♦ smooth and uniform
- ♦ free from twists, peats and puckers
- ♦ sufficiently extensible to avoid seam cracking and undue shrinkage in use

Ends of sewing shall be:

- ♦ trimmed and loose threads removed
- ♦ back-tacked if unsecured

Doc No	Date	Responsibility	Version	Page
CSS 286.21 G156	June 2012	Transnet	V01.0	6 of 22

8. Sizes



Measuring point		Description
A – A	Chest Circumference	Measure at the base of the scye, with garment spread completely flat, front slide fastener fastened, and multiply by two.
B – B	Back length	Measure from the centre back neck seam to the bottom edge of the garment.
C – G	Sleeve length	Measure along the overarm of the sleeve, from the crown of the sleeve to the outer edge of the cuff.
D – D	Back width	Measure across the narrowest part of the back (back pitch position), from one sleeve insertion seam to the other.
B – E	Depth of scye	Measure from the centre back neck seam to the level of the base of the scye.
F – F	Bottom hem	Measure across the width of the bottom hem, with the slide fastener fastened and multiply by two.

Doc No	Date	Responsibility	Version	Page
CSS 286.21 G156	June 2012	Transnet	V01.0	7 of 22

Table 1 - Size chart

1	2	3	4	5	6
Size Designation	Nominal finished garment measurements, cm				
	Chest	Back length	Sleeve length	Back width	Bottom hem circumference
2X-Small 62/67	90	79	56	44	90
X-Small 72/77	100	81	58	46	100
Small 82/87	110	83	60	48	110
Medium 92/97	120	85	62	50	120
Large 102/107	130	87	64	52	130
X-Large 112/117	140	89	66	54	140
2X-Large 122/127	150	91	68	56	150
1) Based on the chest circumference, in centimetres, of the intended wearer.					

Doc No	Date	Responsibility	Version	Page
CSS 286.21 G156	June 2012	Transnet	V01.0	8 of 22

Table 1 - Size chart (continued)

1	2	3	4	5	6
Size Designation	Nominal finished garment measurements, cm				
	Chest	Back length	Sleeve length	Back width	Bottom hem circumference
3X-Large 132/137	160	93	70	58	160
4X-Large 142/147	170	95	71	60	170
5X-Large 152/157	180	97	72	62	180
6X-Large 162/167	190	99	73	64	190
Special Measurement					
1) Based on the chest circumference, in centimetres, of the intended wearer.					

Doc No	Date	Responsibility	Version	Page
CSS 286.21 G156	June 2012	Transnet	V01.0	9 of 22

9. Make

Illustrations are not to scale and for guidance only, and unless inconsistent with the text, all measurements are nominal.

9.1 Foreparts

9.1.1 General:

- ♦ be single breasted
- ♦ fasten with a slide fastener
- ♦ be cut with straight side seams
- ♦ have straight bottom hems
- ♦ be fully lined with lining
- ♦ be fully interlined with wadding
- ♦ centre front edges to be abutted (i.e. front edges of jacket to meet and conceal the slide fastener)

9.1.2 Forepart panels

Each forepart to:

- ♦ be cut with a horizontal seam and divided into two sections
 - top section
 - lower section
 - horizontal seam to be centrally positioned between the neck point and the bottom hem (see figure 4)
- ♦ be fitted with a stringer of a slide fastener
 - to extend from the gorge seam to 50 mm above the bottom hem
 - stringer to be sandwiched between the forepart and lining and sewn down with two rows of stitching
- ♦ be fitted with a strip of reflective tape that shall encircle the whole body of the garment (see 9.3)

9.1.2.1 Right forepart

- ♦ to be fitted with five male press stud sections in corresponding positions to the female sections on the storm flap
- ♦ **right top section:**
 - made from “Olive Green” outer material (See 6.1)
 - to be fitted with embroidery
 - the words “TRAIN CREW” to be embroidered with embroidery thread
 - colour of embroidery thread to be black
 - word to be in capital letters
 - length of word to be 65 mm
 - height of letters to be 6 mm
 - positioned in such a way that the two words shall be centred in the distance between the front edge and the sleeve insertion seam
 - top edge to be positioned in line with the top edge of the Transnet Logo on the left forepart
- ♦ **right lower section**
 - made from “Black” outer material” (see 6.1)
 - to be fitted with a side patch pocket

9.1.2.2 Left forepart

- ♦ to be fitted with a storm flap (see 9.2)
- ♦ **left top section:**
 - made from “Olive Green” outer material (See 6.1)
 - to be fitted with embroidery
 - the registered Transnet Logo to be embroidered with embroidery thread
 - colour of embroidery thread to be black

Doc No	Date	Responsibility	Version	Page
CSS 286.21 G156	June 2012	Transnet	V01.0	10 of 22

- dimensions to be as given in figure 3
- positioned in such a way that the logo is centred in the distance between the front edge and the sleeve insertion seam
- positioned from the neck point as given in figure 4 on size Large and graded proportionally on the smaller and larger sizes

◆ **left lower section**

- made from “Black” outer material” (see 6.1)
- to be fitted with a side patch pocket

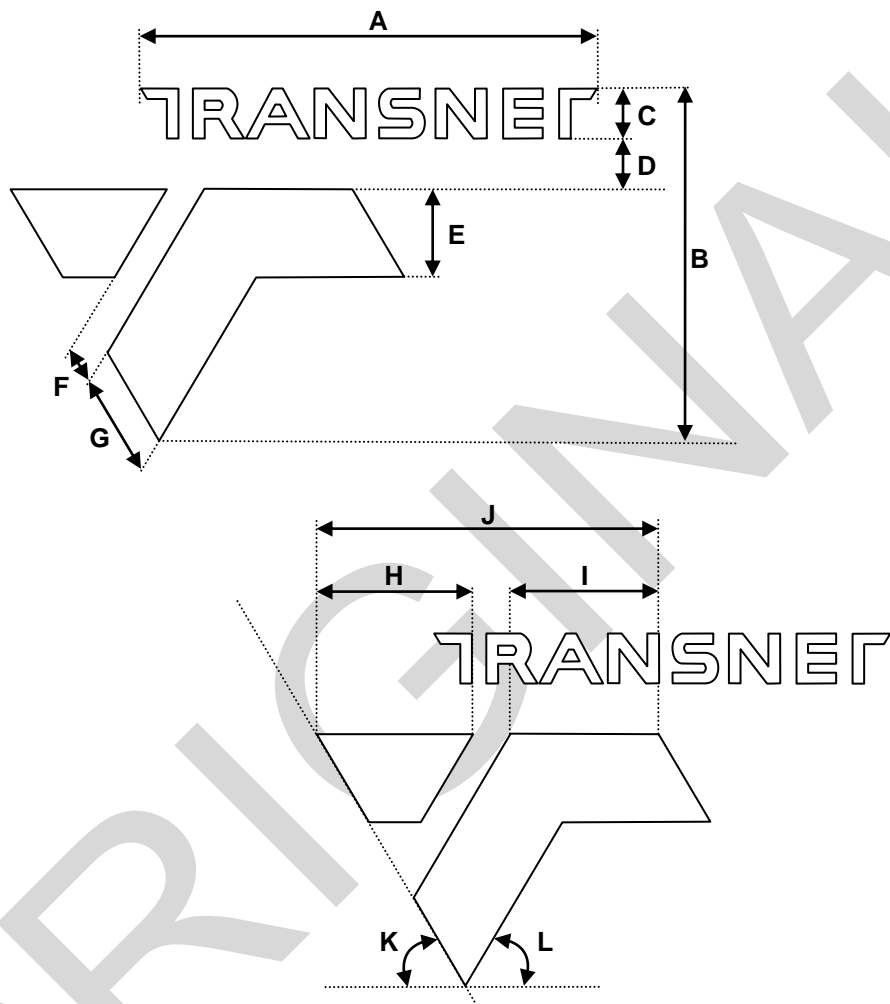


Figure 3 – Dimensions of Transnet logo

Figure No	Item	A	B	C	D	E	F	G
3		37 mm	32 mm	6 mm	6 mm	8 mm	2 mm	8 mm
	Item	H	I	J	K	L	-	-
		12 mm	12 mm	25 mm	60°	60°	-	-

Doc No	Date	Responsibility	Version	Page
CSS 286.21 G156	June 2012	Transnet	V01.0	11 of 22

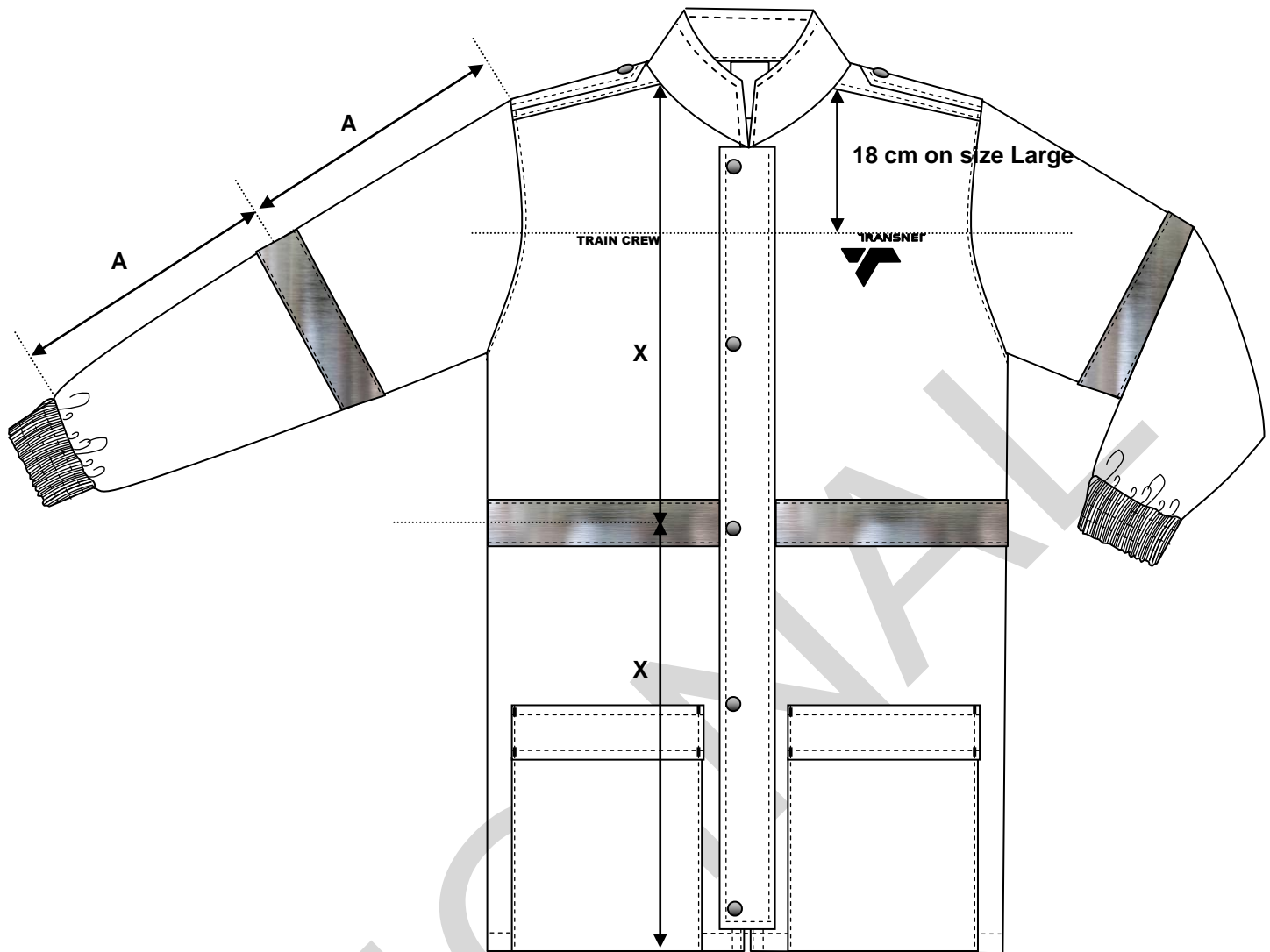


Figure 4 – Position of embroidery on size Large

9.2 Storm flap

- ♦ of outer material
- ♦ lined with outer material
- ♦ interlined with interlining
- ♦ sewn to the left forepart
- ♦ of finished width 75 mm
- ♦ to conceal the slide fastener front opening
- ♦ to extend from the gorge seam to 25 mm above the bottom hem
- ♦ edge-stitched 6 mm along all edges
- ♦ sewn down in such a way that the outer edge of the storm flap shall be positioned 25 mm from the centre front edge (excluding the stringer of the slide fastener)
- ♦ cut edge of storm flap to be sewn to the forepart, folded over and sewn down 6 mm from the folded edge
- ♦ fitted with five female press-studs
 - positioned 15 mm from the front free edge of the storm flap (centres)
 - top press-stud to be positioned 15 mm below the top edge of the storm flap (centres)
 - bottommost press-stud to be positioned 15 mm above the bottom edge of the storm flap (centres)
 - the remaining press-studs shall be equidistantly spaced between the topmost and bottommost press-studs

Doc No	Date	Responsibility	Version	Page
CSS 286.21 G156	June 2012	Transnet	V01.0	12 of 22

9.3 Reflective tape on body

- ♦ to encircle the whole body of the jacket
- ♦ cut ends to be sewn in with the centre front edges of the jacket
- ♦ attached by means of 2 mm edge-stitchings along the top and bottom edges of the tape
- ♦ tape to be centred over the horizontal seam of the foreparts and back

9.4 Side pockets and flaps

9.4.1 Pockets

- ♦ each lower forepart section shall be fitted with a side pocket
- ♦ of "Black" outer material
- ♦ to be a patch pocket
- ♦ bottom edge of pocket to be sewn in with the bottom hem of the jacket
- ♦ pocket mouth hem to be of finished depth 20 mm
- ♦ pocket mouth ends to be bar-tacked
- ♦ side edges to be folded in 10 mm and edge-stitched 2 mm
- ♦ of finished width and depth 20 cm
- ♦ positioned 55 mm from the front edge of size designation Large and graded proportionally on the other sizes (where required)

9.4.2 Pocket flaps

- ♦ each pocket shall have a pocket flap
- ♦ of "Black" outer material
- ♦ to be of double folded outer material
- ♦ to be of finished depth 60 mm
- ♦ to be the same width as specified for the pocket
- ♦ bottom edge to be edge-stitched 6 mm
- ♦ top edge to be sewn to the forepart, folded over and sewn down 7 mm from the folded edge
- ♦ side edges to be sewn down onto the forepart and pocket
- ♦ flap to be positioned in such a way that it shall overlap the mouth opening by 40 mm
- ♦ bar-tacked at the top and bottom outer edges

NOTE: *If the pockets do not fit on all sizes, deviations shall be as agreed upon between the purchaser and supplier.*

9.5 Back

- ♦ be cut with a horizontal seam and divided into two sections
 - top section
 - lower section
- horizontal seam to be a continuation of the horizontal seam on the foreparts
- ♦ be fitted with a strip of reflective tape that shall be a continuation of the tape on the foreparts (see 9.3)
- ♦ fully lined with lining and fully interlined with wadding

9.5.1 Top back section

- ♦ to be made from "Olive green" outer material
- ♦ cut in such a way that the shoulder seam shall be positioned 50 mm forward of the natural shoulder line and top-stitched 3 mm
- ♦ fitted with a male section of a press-stud fastener in a corresponding position to the female section on the shoulder straps

Doc No	Date	Responsibility	Version	Page
CSS 286.21 G156	June 2012	Transnet	V01.0	13 of 22

9.5.2 Lower back section

- ♦ made from “Black” outer material

9.6 Collar

- ♦ a one-piece, turned-down collar
- ♦ to be made from “Olive green” outer material
- ♦ lined with “Olive Green” outer material
- ♦ interlined with interlining and wadding
- ♦ constructed in such a way that the:
 - collar shall be of finished depth 95 mm at the centre back
 - collar shall be of finished depth 95 mm at the points
- ♦ such that it shall extend from the right front edge to the left front edge (to meet at centre front)
- ♦ edge-stitched 10 mm along the free edges

9.7 Sleeves

- ♦ one-piece type sleeves
- ♦ set in sleeves
- ♦ depth of scye to measure 34 cm on size designation Large and graded proportionally on the smaller and larger sizes
- ♦ the underarm sleeve length shall measure 57 cm on size designation Large and graded proportionally on smaller and larger sizes (measure along the underarm seam from the base of the scye to the outer edge of the cuff)
- ♦ fully lined with lining and fully interlined with wadding
- ♦ to be cut in two sections (see figure 4)
 - upper section to be made from “Olive Green” outer material
 - lower sections to be made from “Black” outer material
- ♦ a strip of reflective tape shall encircle the sleeve and shall be centrally positioned over the horizontal seam
 - cut edges shall be sewn in with the underarm seam
 - attached by means of a 2 mm edge-stitching
- ♦ sleeve insertion seams to be top-stitched 3 mm
- ♦ to have sewn-on cuffs
 - of double folded outer material (“Black”)
 - of finished width 45 mm
 - fitted with elastic webbing and ruched with three rows of equidistantly spaced stitchings
 - relaxed measurement to be such that it shall fit comfortably around the wrist of the intended wearer

9.8 Shoulder straps

- ♦ of outer material
- ♦ lined with outer material
- ♦ interlined with interlining
- ♦ have a mitred point
- ♦ top stitched 6 mm around the free edges
- ♦ mitre to be of finished length 25 mm
- ♦ of minimum length 12 cm (measured to base of mitre to sleeve insertion seam)
- ♦ of width 50 mm at the sleeve end tapering to 40 mm at the base of the mitre
- ♦ wide end of the strap sewn in with the sleeve-to-shoulder seam
- ♦ positioned in such a way that the front edge of the shoulder strap is 10 mm above the shoulder seam and parallel to the shoulder seam
- ♦ fitted with a female section press-stud
 - positioned at the base of the mitre (centre)

Doc No	Date	Responsibility	Version	Page
CSS 286.21 G156	June 2012	Transnet	V01.0	14 of 22

9.9 Lining

- ♦ a layer of lining fabric and a layer of wadding that are quilted by vertical rows of stitching 10 cm apart
- ♦ front, back and sleeves to be fully lined and interlined with wadding as given above

9.10 Bottom hem

- ♦ to be folded to the inside and of finished width 20 mm

10. Stitches, seams and stitching

10.1 Stitches

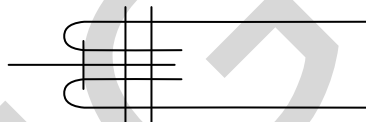
Sewing: lock stitch or safety stitch

Overlocking stitch: three of four thread overlocking stitch

10.2 Seams

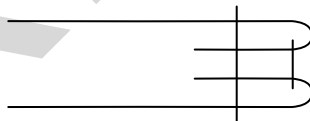
Seams to be least 10 mm wide (unless otherwise stated)

Attaching front slide fastener: seam type SSq-3



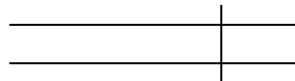
Form seam Type SSa-1, using three or more plies of material. Then turn each outer ply back at the seam and seam with the appropriate number of rows of stitches.

Free edges of collar, storm flap and shoulder straps: seam type SSe-2



Form seam Type SSa-1, using two plies of material. Then turn back each ply at the seam and seam through the turned edges with the appropriate number of rows of stitches.

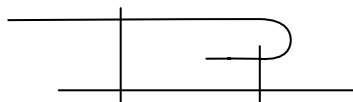
Main seams: seam type SSa-1



Superimpose two or more plies of material and seam with one row of stitches positioned at the specific distance(s) from the aligned edges.

Doc No	Date	Responsibility	Version	Page
CSS 286.21 G156	June 2012	Transnet	V01.0	15 of 22

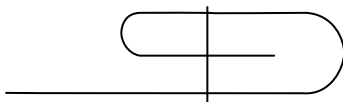
Attaching the storm flap and top edge of pocket flaps: seam type LSs-2



So superimpose two plies of material that their edges are the specified distance apart, and seam with one row of stitches at the specified distance from the edge of the top ply. Then turn the top ply back at the seam and seam with one row of stitches through the top and bottom plies.

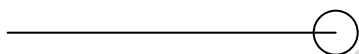
10.3 Stitchings

Bottom hem and pocket mouth hems: stitching type EFb



Turn in the specified width at the edge of a ply of material, fold back the turned edge, and stitch the turned-in and folded portion with the appropriate number of rows of stitches.

All exposed raw edges: stitching type EFd



Stitch over the edge of a ply of material with one row of stitches.

10.4 Number of stitches

seaming and top stitching: 40 ± 4 per 10 cm

overlocking: 36 ± 4 per 10 cm

bar tracks: 12 ± 1 per 1 cm

11. Care-labelling and marking

11.1 Label properties

All labels shall:

- ♦ be white woven rayon labels that are printed
- ♦ comply with SANS 1309 "Printed labels for textiles"
 - information to be in legible and indelible block letters of height at least 3 mm
- ♦ permanently secured
- ♦ be such that they outlast the garments (including the markings)

Doc No	Date	Responsibility	Version	Page
CSS 286.21 G156	June 2012	Transnet	V01.0	16 of 22

11.2 Care-labelling

- ♦ each garment shall have a label that provides correct and appropriate care instructions (in words and symbols, in accordance with SANS10011 “Care-labelling of textile piece-goods, textile articles and clothing”)
- ♦ each label to include the composition of the main fabric in accordance with the requirements of SANS 10235 “Fibre-content labelling of textiles and textile products”

11.3 Marking

- ♦ Each jacket shall have, sewn in with the centre back collar seam on the inside, a label that provides the following information:
 - the word “TRANSNET”
 - the manufacturer's name or trade mark or both
 - the item number
 - the size designation
 - the spec number
 - the fibre composition of the body fabric
 - the country of origin
 - the year of manufacture
 - the VAT number of the contractor

TRANSNET

Manufacturer's name

ITEM NO:

35/000000

SIZE: LARGE

Spec No: CSS 286.21 G156

65% Polyester/ 35 % Cotton

MADE IN SOUTH AFRICA

2012

VAT No: 4679312

Figure 5 – Example of information on label

12. Packaging and marking of packaging

12.1 Packing

12.1.1 The jacket shall be:

- ♦ delivered in a commercially dry condition

Doc No	Date	Responsibility	Version	Page
CSS 286.21 G156	June 2012	Transnet	V01.0	17 of 22

- ♦ so packed that they will not be damaged in transit or in storage
- ♦ neatly folded and individually packed in a plastics envelope of suitable size and shape
- ♦ unless otherwise specified in the order or contract, acceptably packed for transportation in acceptable bulk containers

12.1.2 Jacket:

- ♦ of the same size designation to be packed together in a bulk container (unless quantities ordered are such that packing together of the same size is not justified)
- ♦ of different size designations may also be packed together to accommodate the last part of an order or contract

12.2 Marking

12.2.1 Envelopes

To be as specified in CSS 286.21 LAB/1.

12.2.2 Bulk containers

To be as specified in CSS 286.21 PAC/1.

12.3 Additional marking

When so required by the Transnet, jacket, envelopes or containers (or any combination of these) to bear information additional to that specified above.

13. Normative References

The following documents contain provisions which, through reference in this text, constitute provisions of this specification. All documents are subject to revision and, since any reference to a document is deemed to be a reference to the latest edition of that document, parties to agreements based on this specification are encouraged to take steps to ensure the use of the most recent editions of the documents indicated below. Information on currently valid national, international and CKS documents may be obtained from Standards South Africa*.

CKS 627, *Fusible interlinings.*

CSS 286.21 LAB/1, *Labelling.*

CSS 286.21 PAC/1, *Packaging.*

SANS 79, *Textiles - Mass per unit area of conditioned fabrics.*

SANS 142, *Narrow elastic fabrics and strip.*

SANS 1309, *Printed labels for textiles.*

SANS 1362, *Sewing threads.*

SANS 1387-2, *Woven cotton and similar apparel fabrics – Part 2: Polyester-and-cotton workwear fabrics.*

* Standards South Africa: Tel. +27 (0) 12 4287911

Doc No	Date	Responsibility	Version	Page
CSS 286.21 G156	June 2012	Transnet	V01.0	18 of 22

SANS 1387-7, *Woven cotton and similar apparel fabrics – Part 7: Jacket linings.*

SANS 1387-11, *Woven cotton and similar apparel fabrics – Part 11: Polyester-and-cellulosic raincoat fabrics.*

SANS 1822, *Slide fasteners.*

SANS 1833-1/ISO 1833-1, *Textiles – Quantitative chemical analysis – Part 1: General principles of testing.*

SANS 1833-11/ISO 1833-11, *Textiles – Quantitative chemical analysis – Part 11: Mixtures of cellulose and polyester fibres (method using sulphuric acid).*

SANS 5278, *Sewing stitches per unit length.*

SANS 50471, *High visibility warning clothing for professional use – test methods and requirements.*

SANS 10011, *Care-labelling of textiles and clothing.*

SANS 10235, *Fibre content labelling of textiles and textile products.*

SANS 10371, *Terms and definitions for clothing.*

Doc No	Date	Responsibility	Version	Page
CSS 286.21 G156	June 2012	Transnet	V01.0	19 of 22

ANNEX A

(Normative)

Special conditions of tender

A-1 GENERAL

- A-1.1** Unless otherwise stated, Transnet (or an organization deputed by it), shall be the inspecting authority.
- A-1.2** Three pre-production sample jackets, shall have been inspected, tested and approved by the inspecting authority before bulk production is commenced. Each one of these samples shall be accompanied by a trim chart containing a sample of each component material (as given in section 6) and the relevant certificates. It shall be the duty of the manufacturer to give adequate notice to the inspecting authority of the availability of these samples.
- A-1.3** The jackets shall be subject to inspection during the course of manufacture. The inspector shall, during normal working hours, be given all reasonable facilities for carrying out his duties and shall have the right of entry into the contractor's factory and the factory or works of any subcontractor where work on jackets supplied to this specification may be in progress
- A-1.4** The contractor shall inspect the finished jackets for compliance with the specification before submitting them to the inspecting authority for final inspection.
- A-1.5** Before acceptance, the jackets shall have been inspected and tested by the inspecting authority and found to comply with the requirements of the specification.

A-2 DOCUMENTATION

One container of each consignment shall be marked "DOCUMENTS" and in addition to the jackets, shall contain the following:

- a) The packaging slip or delivery note;
- b) where applicable the inspection certificate(s);
- c) a copy of the invoice containing the following information:
 - the order number
 - the financial authority number
 - a full description of the consignment, i.e. Item number, quantity, etc

Doc No	Date	Responsibility	Version	Page
CSS 286.21 G156	June 2012	Transnet	V01.0	20 of 22

ANNEX B
(Normative)
CKS 129 Colours

Due to the fact that colours can change over a period of time, any colour standard which has been registered for a period of SEVEN YEARS or more shall be considered obsolete. These standards shall then be allocated an archived status (as opposed to current status) and re-registration shall be required.

A. The following scenarios require a submission of three metres of fabric and/or a reel of embroidery thread from the successful tenderer:

1. A colour standard is archived.
2. First time registration is required (CKS 129 colour number does not exist).
3. Colour swatch stock at the SABS is no longer available.

B. Requirements for the submission of fabric as identified in A:

1. The colour shall be as agreed upon between Transnet and the successful tenderer.
2. The fabric and embroidery thread shall be used to make new colour swatches which shall be the responsibility of the SABS.
3. The cost of the three metres of fabric and embroidery thread shall be incorporated in the relevant tender submission.

Doc No	Date	Responsibility	Version	Page
CSS 286.21 G156	June 2012	Transnet	V01.0	21 of 22

HISTORY SHEET				
Version	DATE	AMENDMENTS/HISTORY	CHECKED	
			NAME	INIT.
1.0	June 2012	First release		

ORIGINAL

Doc No	Date	Responsibility	Version	Page
CSS 286.21 G156	June 2012	Transnet	V01.0	22 of 22